

Website Spotlight

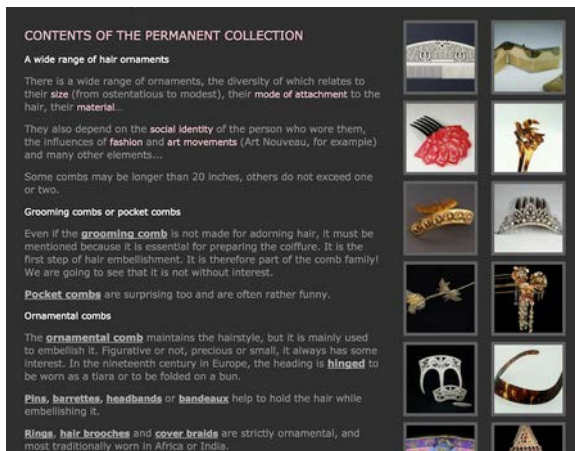


Creative Museum Philip Gust*

A virtual museum of rarely studied or collected hairdressing accessories from around the world and their history.

The Creative Museum is a virtual museum exhibiting hairdressing accessories that are held in the private collection. It was started by Leona Pettit, the wife of a French army captain, who began collecting pieces while traveling through Africa and Asia in the early 20th century.

She and her husband were passionate about the collection as it grew, and quickly realized that the knowledge they gained was an important area of expertise that they wanted to share. The result was the creation of a virtual museum that provides access to

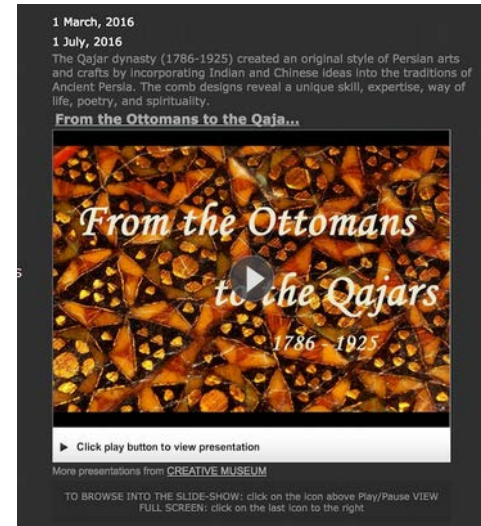


both the collection and extensive information about hairdressing accessories.

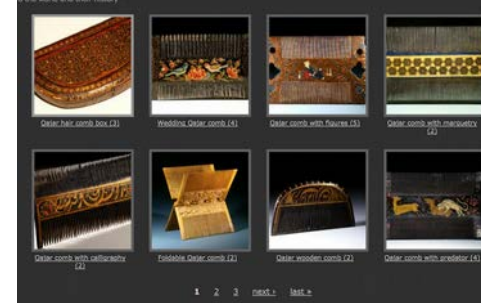
The museum consists of an online catalog of accessories in the permanent collection, and a set of virtual exhibitions covering certain aspects of hair ornaments.

The catalog is organized by the types of accessories, cultures, materials, construction techniques, styles, signatures, geography, and context. Each presents a landing page with extensive descriptive text about the accessories in that category and image thumbnails. The text includes links to pages with more details about a topic discussed. The image thumbnails also link to pages describing the items in more detail.

The virtual exhibitions cover a range of interesting topics. Current exhibitions include topics like: “From the Ottomans to the Qajars,” “Stones, Leaves, Scissors,” “Le Japon Amoureux,” “From Art Nouveau to



Exhibition page (above) and catalog (below).



Art Deco,” and “The Riches of the French Empire.” Many include a video with information about the topic, and links to a more in-depth material, including a catalog of related accessories.

One warning: the videos may require a Flash plugin. Safari on MacOS with this plugin disabled cannot display this content.

The Creative Museum is an amazing resource, not only for its wealth of useful and fascinating information, but also as a reference for costumers to identify or locate accessories that are appropriate for their needs. The museum gratefully accepts donations to continue their work. The

[Creative Museum](#) is well worth your consideration and financial support.

Philip Gust enjoys sci-fi and fantasy costuming, and has particular interests in props, special effects, and prosthetic makeup. He also costumes in historical periods, including Regency, Victorian, and early 20th C.